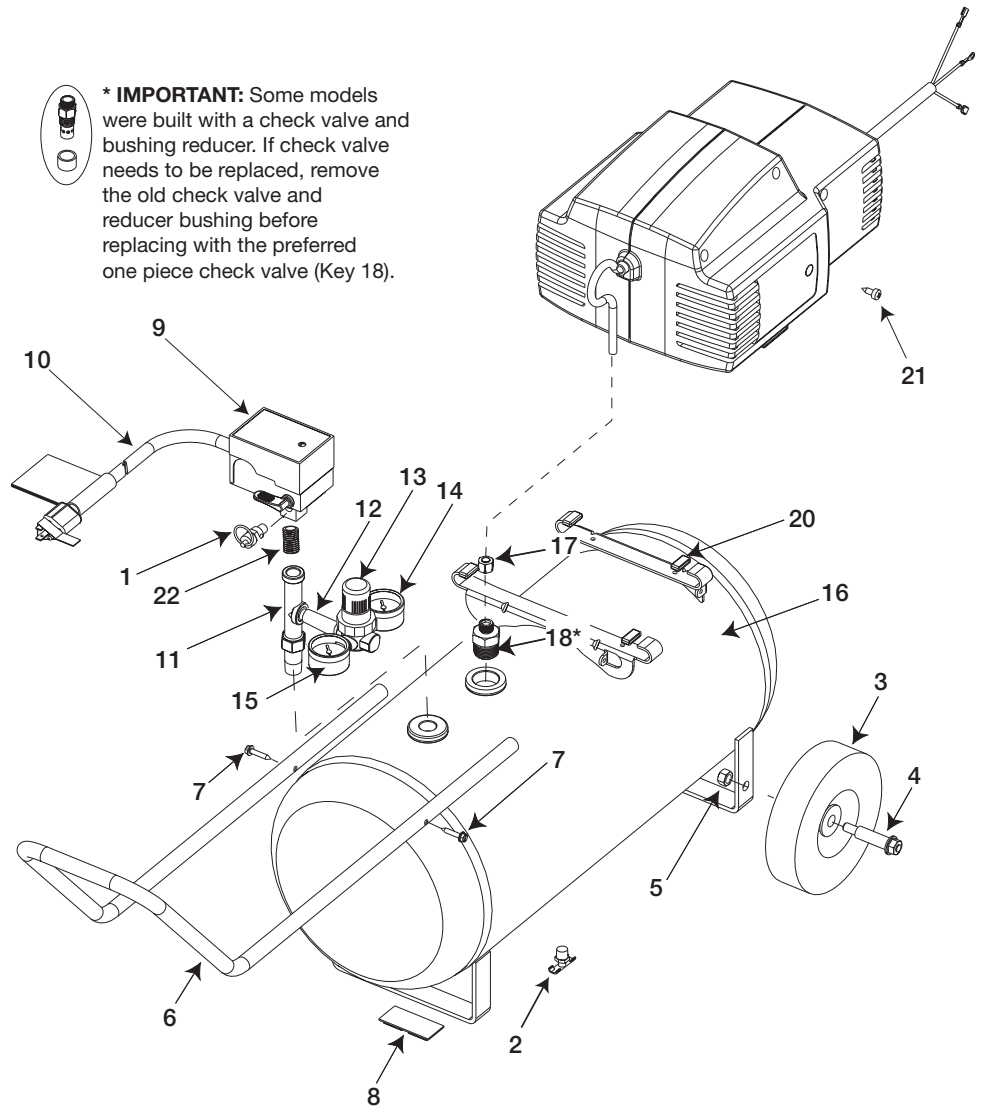




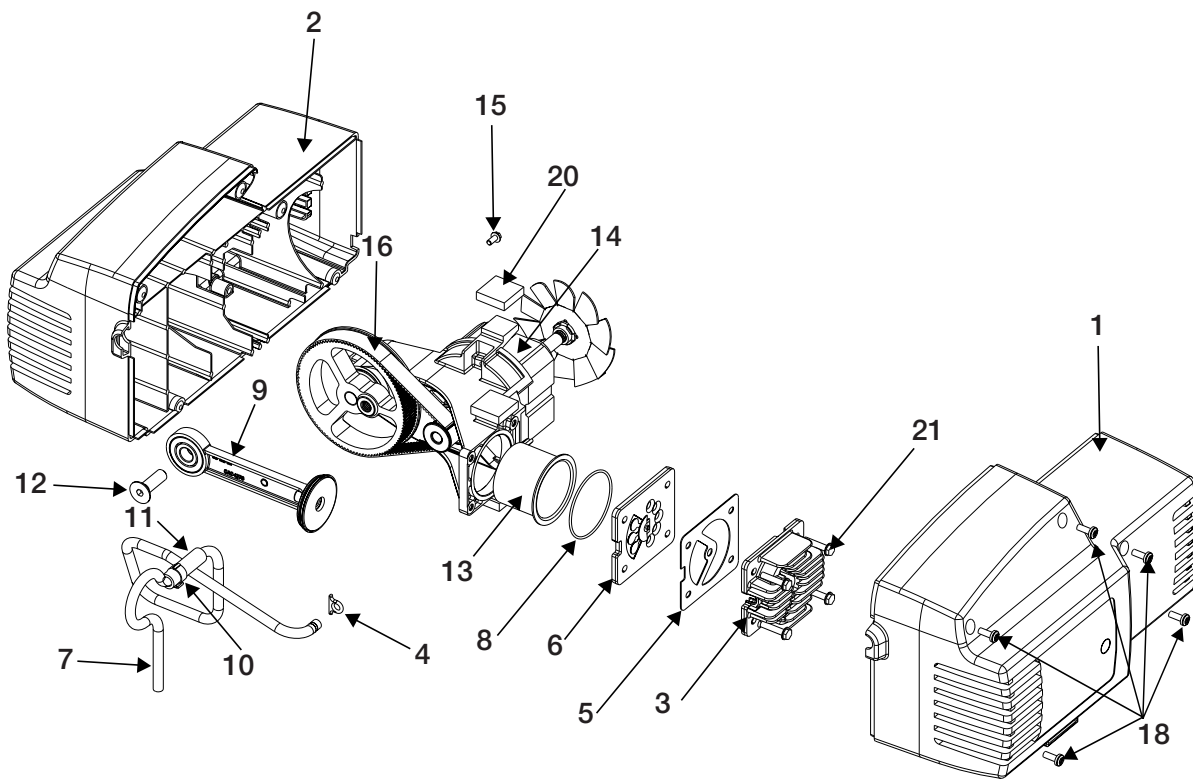
# CP503-1 Oilfree Air Compressor

PART NO. D29410 r0  
Date: 5/16/03



**\* IMPORTANT:** Some models were built with a check valve and bushing reducer. If check valve needs to be replaced, remove the old check valve and reducer bushing before replacing with the preferred one piece check valve (Key 18).

Ref. No.	Part No.	Description	Ref. No.	Part No.	Description
1	TIA-4150	Safety Valve	12	SSP-480	Nipple 1/4-18 NPT x .250
2	SS-2707	Drain Valve	13	D21426	Regulator
3	D23138	Wheel 9" (2 used)	14	Z-AC-0009-1	Gauge - Right Hand
4	CAC-60	Shoulder Bolt (2 used)	15	Z-AC-0010-1	Gauge - Left Hand
5	SSF-8080-ZN	Nut Hex 3/8-16 (2 used)	16	Z-D26922	Tank
6	AC-0345	Handle	17	SSP-473	Nut Sleeve
7	SSF-612	Screw #10-16 x 1.00 (2 used)	18	D29264	Check Valve
8	AC-0364	Molded Foot Bumper	20	* CAC-1254	Isolator (4 used)
9	Z-D27227	Pressure Switch	21	* SSF-621	Screw 1/4-14 x .625 (2 used)
10	D26615	Cord Assembly	22	SS-1286	Nipple, 1/4-18 NPT x .88
11	AC-0027-2	Manifold			



<b>Ref. No.</b>	<b>Part No.</b>	<b>Description</b>
1	AC-0471	Shroud, Left
2	D25734	Shroud, Right
3	CAC-1196	Cylinder Head
4	* CAC-1212	Tube Seal
5	* D24819	Gasket Head
6	Z-D24985	Valve Plate Assembly
7	AC-0161	Outlet Tube
8	* SSG-8169	O-ring
9	+ -----	Rod Assembly
10	CAC-1206-1	Clamp
11	AC-0206	Isolator Tube
12	x SSF-3147	Screw 3/8-16 x .375
13	+ -----	Cylinder Sleeve
14	-----	Endbell Assembly
15	x SUDL-9-1	Screw 8-32x .375/.344
16	AC-0815	Timing Belt
18	x SSF-3156	Screw, 10-9 x.500 Plastite (5 used)
20	* D25731	Pump Isolator (5 used)
21	x SSF-995	Screw #10-24 x .875 (4 used)

**Not Shown**

D27278 Motor Cord

**Kits Available**

\* K-0387 Isolator Kit  
 + KK-4964 Connecting Rod Kit  
 x KK-4929 Fastener Kit